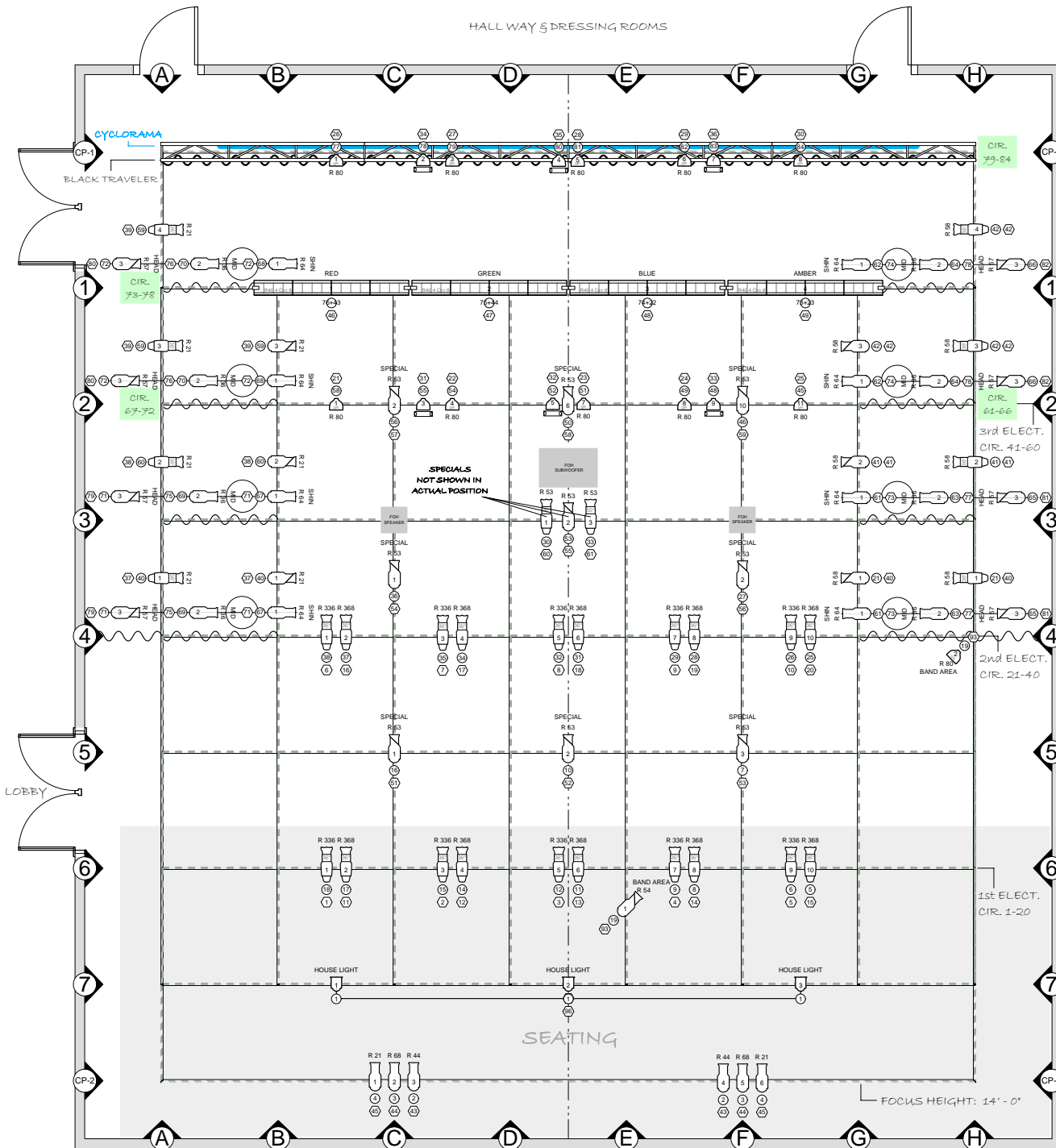
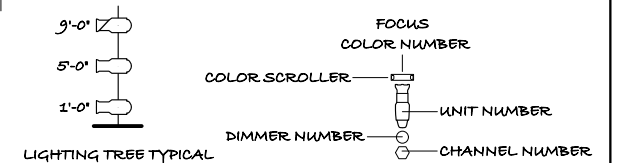


HALL WAY & DRESSING ROOMS



KEY TO SYMBOLS

INSTRUMENTS	No. IN INVENTORY	USED	REMAINING
ETC Source 4 50deg	1	1	0
ETC Source 4 36deg	27	27	0
ETC Source 4 26deg	4	1	3
Altman 360Q 6x9	28	22	6
Altman 360Q 6x12	30	24	6
Altman 360Q 6x16	4	0	4
ETC Source 4 PAR	16	16	0
Altman 6' Fresnel	18	0	18
Altman R40 8ft. 4Cir. Striplight	4	4	0



CENTER STAGE THEATER
HOUSE LIGHT PLOT

SCALE: 1/8" = 1' - 0"

GRID HEIGHT: 20' - 0"

NOTE:
LIGHTING INSTRUMENTS
USED IN THE HOUSE LIGHT PLOT MAY NOT BE MOVED
ONLY REFOCUSSED AND OR RECOLORED
WITH PERMISSION FROM THE TECHNICAL DIRECTOR
NO MORE INSTRUMENTS MAY BE ADDED TO 'CP-1' OR 'CP-2'

NOTE:
ADDITIONAL CHARGES WILL BE ADDED FOR THE USE OF:
~ SIDE LIGHT TREES ~ ADDITIONAL LIGHTING INSTRUMENTS ~
~ COLOR SCROLLERS ~ CYCLORAMA ~ STRIP/CYC LIGHTS ~

CHANNEL HOOKUP

Channel	Dim	Pos	U#	Type & Wattage	Purpose	Color & Temp
(1)	18	Grid-6	1	36 Deg. Source Four 575w	Warm Front	R 336
(2)	15	Grid-6	3	36 Deg. Source Four 575w	Warm Front	R 336
(3)	12	Grid-6	5	36 Deg. Source Four 575w	Warm Front	R 336
(4)	9	Grid-6	7	36 Deg. Source Four 575w	Warm Front	R 336
(5)	6	Grid-6	9	36 Deg. Source Four 575w	Warm Front	R 336
(6)	38	Grid-4	1	36 Deg. Source Four 575w	Warm Front	R 336
(7)	35	Grid-4	3	36 Deg. Source Four 575w	Warm Front	R 336
(8)	32	Grid-4	5	36 Deg. Source Four 575w	Warm Front	R 336
(9)	29	Grid-4	7	36 Deg. Source Four 575w	Warm Front	R 336
(10)	26	Grid-4	9	36 Deg. Source Four 575w	Warm Front	R 336
(11)	17	Grid-6	2	36 Deg. Source Four 575w	Cool Front	R 368
(12)	14	Grid-6	4	36 Deg. Source Four 575w	Cool Front	R 368
(13)	11	Grid-6	6	36 Deg. Source Four 575w	Cool Front	R 368
(14)	8	Grid-6	8	36 Deg. Source Four 575w	Cool Front	R 368
(15)	5	Grid-4	10	36 Deg. Source Four 575w	Cool Front	R 368
(16)	37	Grid-4	2	36 Deg. Source Four 575w	Cool Front	R 368
(17)	34	Grid-4	4	36 Deg. Source Four 575w	Cool Front	R 368
(18)	31	Grid-4	6	36 Deg. Source Four 575w	Cool Front	R 368
(19)	28	Grid-4	8	36 Deg. Source Four 575w	Cool Front	R 368
(20)	25	Grid-4	10	36 Deg. Source Four 575w	Cool Front	R 368
(21)	58	Grid-2	1	Source Four Par 750w (WFL)	Backlight	R 80
(22)	54	Grid-2	4	Source Four Par 750w (WFL)	Backlight	R 80
(23)	51	Grid-2	7	Source Four Par 750w (WFL)	Backlight	R 80
(24)	49	Grid-2	8	Source Four Par 750w (WFL)	Backlight	R 80
(25)	45	Grid-2	11	Source Four Par 750w (WFL)	Backlight	R 80
(26)	77	CP-1	1	Source Four Par 750w (WFL)	Backlight	R 80
(27)	79	CP-1	3	Source Four Par 750w (WFL)	Backlight	R 80
(28)	81	CP-1	5	Source Four Par 750w (WFL)	Backlight	R 80
(29)	82	CP-1	6	Source Four Par 750w (WFL)	Backlight	R 80
(30)	84	CP-1	8	Source Four Par 750w (WFL)	Backlight	R 80
(31)	55	Grid-2	3	Source Four Par 750w (XWFL)	Backlight	Color Scroller
(32)	52	Grid-2	5	Source Four Par 750w (XWFL)	Backlight	Color Scroller
(33)	48	Grid-2	9	Source Four Par 750w (XWFL)	Backlight	Color Scroller
(34)	78	CP-1	2	Source Four Par 750w (XWFL)	Backlight	Color Scroller
(35)	80	CP-1	4	Source Four Par 750w (XWFL)	Backlight	Color Scroller
(36)	83	CP-1	7	Source Four Par 750w (XWFL)	Backlight	Color Scroller

Channel	Dim	Pos	U#	Type & Wattage	Purpose	Color & Temp
(37)	40	Grid-A	1	36 Deg. Source Four 575w	SR High Side Lane-1	R 21
	"	Grid-B	1	Altman 6x12 575w	"	"
(38)	60	Grid-A	2	36 Deg. Source Four 575w	SR High Side Lane-2	R 21
	"	Grid-B	2	Altman 6x12 575w	"	"
(39)	59	Grid-A	3	36 Deg. Source Four 575w	SR High Side Lane-3	R 21
	"	Grid-B	4	Altman 6x12 575w	"	"
	"	Grid-A	3	36 Deg. Source Four 575w	SR High Side Lane-4	"
(40)	21	Grid-H	1	36 Deg. Source Four 575w	SL High Side Lane-1	R 58
	"	Grid-G	1	Altman 6x12 575w	"	"
(41)	41	Grid-H	2	36 Deg. Source Four 575w	SL High Side Lane-2	R 58
	"	Grid-G	2	Altman 6x12 575w	"	"
(42)	42	Grid-H	3	36 Deg. Source Four 575w	SL High Side Lane-3	R 58
	"	Grid-G	3	Altman 6x12 575w	"	"
	"	Grid-H	4	36 Deg. Source Four 575w	SL High Side Lane-4	"
(43)	2	CP-2	3	Altman 6x9 575w	Fill	R 44
	"	"	6	"	"	"
(44)	3	CP-2	2	Altman 6x9 575w	Fill	R 68
	"	"	5	"	"	"
(45)	4	CP-2	1	Altman 6x9 575w	Fill	R 21
	"	"	4	"	"	"
(46)	76	Grid-1	1-2	Altman 8ft 4Cir. Strip. 250w	CYC	RED
	43	"	3-4	"	"	"
(47)	75	Grid-1	1-2	Altman 8ft 4Cir. Strip. 250w	CYC	GREEN
	44	"	3-4	"	"	"
(48)	74	Grid-1	1-2	Altman 8ft 4Cir. Strip. 250w	CYC	BLUE
	22	"	3-4	"	"	"
(49)	73	Grid-1	1-2	Altman 8ft 4Cir. Strip. 250w	CYC	AMBER
	23	"	3-4	"	"	"
(51)	16	Grid-5	1	Altman 6x12 575w	SPECIAL	R 53
(52)	10	Grid-5	2	Altman 6x12 575w	SPECIAL	R 53
(53)	7	Grid-5	3	Altman 6x12 575w	SPECIAL	R 53
(54)	36	Grid-C	1	Altman 6x12 575w	SPECIAL	R 53
(55)	53	Grid-3	2	Altman 6x12 575w	SPECIAL	R 53
(56)	27	Grid-F	2	Altman 6x12 575w	SPECIAL	R 53
(57)	56	Grid-2	2	Altman 6x12 575w	SPECIAL	R 53
(58)	50	Grid-2	7	Altman 6x12 575w	SPECIAL	R 53
(59)	46	Grid-2	11	Altman 6x12 575w	SPECIAL	R 53
(60)	30	Grid-3	1	36 Deg. Source Four 575w	SPECIAL	R 53
(61)	33	Grid-3	3	50 Deg. Source Four 575w	SPECIAL	R 53
(71)	67	LANE-1	1	Altman 6x9 575w	SHIN (DSR)	R 64
	"	LANE-2	"	"	"	"
(72)	68	LANE-3	1	Altman 6x9 575w	SHIN (USR)	R 65
	"	LANE-4	"	"	"	"

Center Stage
House Plot

CHANNEL HOOKUP

Page 3 of 4
(73) thru (96)

(73)	61 " LANE-2	LANE-1 LANE-2	1 "	Altman 6x9 575w "	SHIN (DSL) "	R 64 "
(74)	62 " LANE-4	LANE-3 LANE-4	1 "	Altman 6x9 575w "	SHIN (USL) "	R 64 "
(75)	69 " LANE-2	LANE-1 LANE-2	2 "	Altman 6x9 575w "	MID (DSR) "	R 36 "
(76)	70 " LANE-4	LANE-3 LANE-4	2 "	Altman 6x9 575w "	MID (USR) "	R 36 "
(77)	63 " LANE-2	LANE-1 LANE-2	2 "	Altman 6x9 575w "	MID (DSL) "	R 36 "
(78)	64 " LANE-4	LANE-3 LANE-4	2 "	Altman 6x9 575w "	MID (USL) "	R 36 "
(79)	71 " LANE-2	LANE-1 LANE-2	3 "	Altman 6x12 575w "	HEAD (DSR) "	R 57 "
(80)	72 " LANE-4	LANE-3 LANE-4	3 "	Altman 6x12 575w "	HEAD (USR) "	R 57 "
(81)	65 " LANE-2	LANE-1 LANE-2	3 "	Altman 6x12 575w "	HEAD (DSL) "	R 57 "
(82)	66 " LANE-4	LANE-3 LANE-4	3 "	Altman 6x12 575w "	HEAD (USL) "	R 57 "
(85)	597	Grid-2	3	Chroma-Q PLUS (20 Color)	Control	Frame 1 – 20
(86)	598	Grid-2	6	Chroma-Q PLUS (20 Color)	Control	Frame 1 – 20
(87)	599	Grid-2	10	Chroma-Q PLUS (20 Color)	Control	Frame 1 – 20
(88)	600	CP-1	2	Chroma-Q PLUS (20 Color)	Control	Frame 1 – 20
(89)	601	CP-1	4	Chroma-Q PLUS (20 Color)	Control	Frame 1 – 20
(90)	602	CP-1	7	Chroma-Q PLUS (20 Color)	Control	Frame 1 – 20
(93)	19 "	Grid-E Grid-H	1 2	Altman 6x12 575w Source Four Par 575w (WFL)	Band Area Front Band Area Back	R 54 R 80
(96)	1 " "	Grid-7 " "	1 2 3	Strand 6" Fresnel 750w " "	HOUSE " "	N/C " "

NOTES:	CHROMA-Q			
	<u>Color Name</u>	<u>DMX Level</u>	<u>Frame #</u>	<u>Rosco Color #</u>
Color Scrollers -	Clear	0	1	00
Ch 85 Chroma-Q DSR				
Ch 86 Chroma-Q DCTR	Canary	5	2	312
Ch 87 Chroma-Q DSL				
Ch 88 Chroma-Q USR				
Ch 89 Chroma-Q UCTR	Orange	10	3	23
Ch 90 Chroma-Q USL				
GROUP 50 = Ch 85 thru 90	Golden Amber	15	4	21
NOTE: Chroma-Q PLUS Color Scrollers may NOT be moved or refocused.	Light Red	20	5	26
	Medium Red	25	6	27
	Broadway Pink	30	7	339
	Medium Purple	35	8	49
	Gypsy Lavender	40	9	56
	Congo Blue	45	10	382
	Green Blue	51	11	77
	Sky Blue	57	12	68
	Primary Blue	62	13	80
	Peacock Blue	67	14	73
	Blue Green	73	15	93
	Dark Yellow Green	78	16	90
	Soft Golden Amber	83	17	321
	Skelton Exotic Sangria	89	18	39
	Deep Salmon	95	19	42
	Neon Pink	Full – 100%	20	343