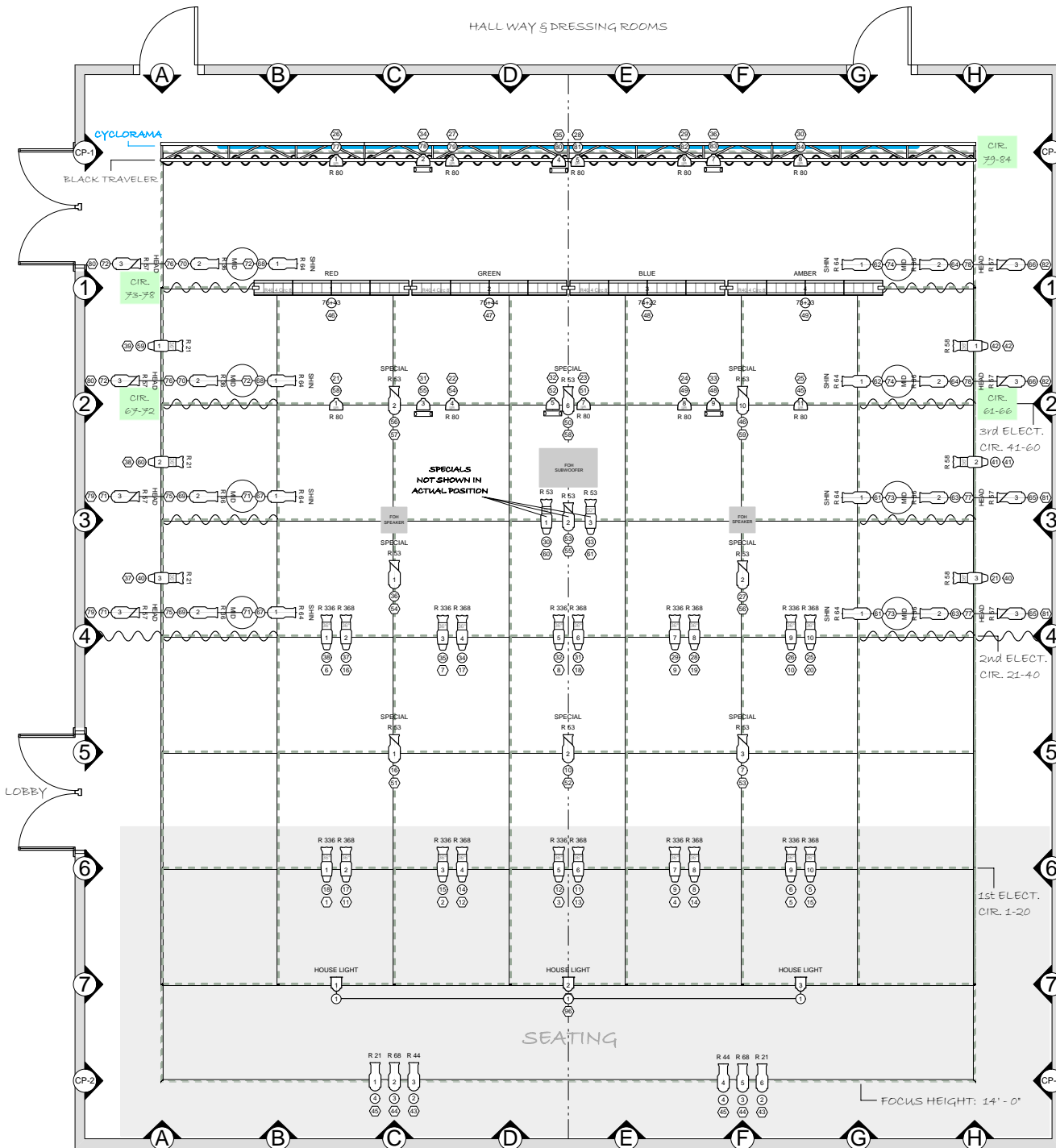
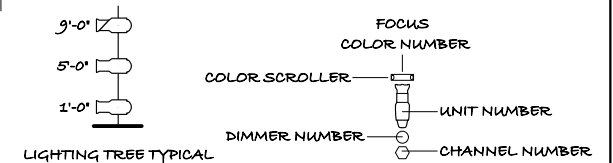


HALL WAY & DRESSING ROOMS



## KEY TO SYMBOLS

INSTRUMENTS	No. IN INVENTORY	USED	REMAINING
ETC Source 4 50deg	1	1	0
ETC Source 4 36deg	27	27	0
ETC Source 4 26deg	4	1	3
Altman 360Q 6x9	28	22	6
Altman 360Q 6x12	25	17	8
Altman 360Q 6x16	4	0	4
ETC Source 4 PAR	16	16	0
Altman 6' Fresnel	18	0	18
Altman R40 8ft. 4Cir. Striplight	4	4	0



## CENTER STAGE THEATER DANCE LIGHT PLOT

SCALE: 1/8" = 1' - 0"

FOCUS HEIGHT: 20' - 0"

NOTE:  
LIGHTING INSTRUMENTS  
USED IN THE DANCE LIGHT PLOT  
MAY NOT BE MOVED  
ONLY REFOCUSSED AND OR RECOLORED  
WITH PERMISSION FROM THE TECHNICAL DIRECTOR  
NO MORE INSTRUMENTS MAY BE ADDED TO 'CP-1' OR 'CP-2'

NOTE:  
ADDITIONAL CHARGES WILL BE ADDED FOR THE USE OF:  
~ SIDE LIGHT TREES ~ ADDITIONAL LIGHTING INSTRUMENTS ~  
~ COLOR SCROLLERS ~ CYCLORAMA ~ STRIP/CYC LIGHTS ~

Channel	Dim	Pos	U#	Type & Wattage	Purpose	Color & Temp
<b>(1)</b>	18	Grid-6	1	36 Deg. Source Four 575w	Warm Front	R 336
<b>(2)</b>	15	Grid-6	3	36 Deg. Source Four 575w	Warm Front	R 336
<b>(3)</b>	12	Grid-6	5	36 Deg. Source Four 575w	Warm Front	R 336
<b>(4)</b>	9	Grid-6	7	36 Deg. Source Four 575w	Warm Front	R 336
<b>(5)</b>	6	Grid-6	9	36 Deg. Source Four 575w	Warm Front	R 336
<b>(6)</b>	38	Grid-4	1	36 Deg. Source Four 575w	Warm Front	R 336
<b>(7)</b>	35	Grid-4	3	36 Deg. Source Four 575w	Warm Front	R 336
<b>(8)</b>	32	Grid-4	5	36 Deg. Source Four 575w	Warm Front	R 336
<b>(9)</b>	29	Grid-4	7	36 Deg. Source Four 575w	Warm Front	R 336
<b>(10)</b>	26	Grid-4	9	36 Deg. Source Four 575w	Warm Front	R 336
<b>(11)</b>	17	Grid-6	2	36 Deg. Source Four 575w	Cool Front	R 368
<b>(12)</b>	14	Grid-6	4	36 Deg. Source Four 575w	Cool Front	R 368
<b>(13)</b>	11	Grid-6	6	36 Deg. Source Four 575w	Cool Front	R 368
<b>(14)</b>	8	Grid-6	8	36 Deg. Source Four 575w	Cool Front	R 368
<b>(15)</b>	5	Grid-4	10	36 Deg. Source Four 575w	Cool Front	R 368
<b>(16)</b>	37	Grid-4	2	36 Deg. Source Four 575w	Cool Front	R 368
<b>(17)</b>	34	Grid-4	4	36 Deg. Source Four 575w	Cool Front	R 368
<b>(18)</b>	31	Grid-4	6	36 Deg. Source Four 575w	Cool Front	R 368
<b>(19)</b>	28	Grid-4	8	36 Deg. Source Four 575w	Cool Front	R 368
<b>(20)</b>	25	Grid-4	10	36 Deg. Source Four 575w	Cool Front	R 368
<b>(21)</b>	58	Grid-2	1	Source Four Par 750w (WFL)	Backlight	R 80
<b>(22)</b>	54	Grid-2	4	Source Four Par 750w (WFL)	Backlight	R 80
<b>(23)</b>	51	Grid-2	7	Source Four Par 750w (WFL)	Backlight	R 80
<b>(24)</b>	49	Grid-2	8	Source Four Par 750w (WFL)	Backlight	R 80
<b>(25)</b>	45	Grid-2	11	Source Four Par 750w (WFL)	Backlight	R 80
<b>(26)</b>	77	CP-1	1	Source Four Par 750w (WFL)	Backlight	R 80
<b>(27)</b>	79	CP-1	3	Source Four Par 750w (WFL)	Backlight	R 80
<b>(28)</b>	81	CP-1	5	Source Four Par 750w (WFL)	Backlight	R 80
<b>(29)</b>	82	CP-1	6	Source Four Par 750w (WFL)	Backlight	R 80
<b>(30)</b>	84	CP-1	8	Source Four Par 750w (WFL)	Backlight	R 80
<b>(31)</b>	55	Grid-2	3	Source Four Par 750w (XWFL)	Backlight	Color Scroller
<b>(32)</b>	52	Grid-2	5	Source Four Par 750w (XWFL)	Backlight	Color Scroller
<b>(33)</b>	48	Grid-2	9	Source Four Par 750w (XWFL)	Backlight	Color Scroller
<b>(34)</b>	78	CP-1	2	Source Four Par 750w (XWFL)	Backlight	Color Scroller
<b>(35)</b>	80	CP-1	4	Source Four Par 750w (XWFL)	Backlight	Color Scroller
<b>(36)</b>	83	CP-1	7	Source Four Par 750w (XWFL)	Backlight	Color Scroller
<b>(37)</b>	40	Grid-A	3	36 Deg. Source Four 575w	SR High Side	R 21
<b>(38)</b>	60	Grid-A	2	36 Deg. Source Four 575w	SR High Side	R 21
<b>(39)</b>	59	Grid-A	1	36 Deg. Source Four 575w	SR High Side	R 21
<b>(40)</b>	21	Grid-H	3	36 Deg. Source Four 575w	SL High Side	R 58
<b>(41)</b>	41	Grid-H	2	36 Deg. Source Four 575w	SL High Side	R 58
<b>(42)</b>	42	Grid-H	1	36 Deg. Source Four 575w	SL High Side	R 58

Channel	Dim	Pos	U#	Type & Wattage	Purpose	Color & Temp
<b>(43)</b>	2	CP-2	3	Altman 6x9 575w	Fill	R 44
	"	"	6	"	"	"
<b>(44)</b>	3	CP-2	2	Altman 6x9 575w	Fill	R 68
	"	"	5	"	"	"
<b>(45)</b>	4	CP-2	1	Altman 6x9 575w	Fill	R 21
	"	"	4	"	"	"
<b>(46)</b>	76	Grid-1	1-2	Altman 8ft 4Cir. Strip. 250w	CYC	RED
	43	"	3-4	"	"	"
<b>(47)</b>	75	Grid-1	1-2	Altman 8ft 4Cir. Strip. 250w	CYC	GREEN
	44	"	3-4	"	"	"
<b>(48)</b>	74	Grid-1	1-2	Altman 8ft 4Cir. Strip. 250w	CYC	BLUE
	22	"	3-4	"	"	"
<b>(49)</b>	73	Grid-1	1-2	Altman 8ft 4Cir. Strip. 250w	CYC	AMBER
	23	"	3-4	"	"	"
<b>(51)</b>	16	Grid-5	1	Altman 6x12 575w	SPECIAL	R 53
<b>(52)</b>	10	Grid-5	2	Altman 6x12 575w	SPECIAL	R 53
<b>(53)</b>	7	Grid-5	3	Altman 6x12 575w	SPECIAL	R 53
<b>(54)</b>	36	Grid-C	1	Altman 6x12 575w	SPECIAL	R 53
<b>(55)</b>	53	Grid-3	2	Altman 6x12 575w	SPECIAL	R 53
<b>(56)</b>	27	Grid-F	2	Altman 6x12 575w	SPECIAL	R 53
<b>(57)</b>	56	Grid-2	2	Altman 6x12 575w	SPECIAL	R 53
<b>(58)</b>	50	Grid-2	7	Altman 6x12 575w	SPECIAL	R 53
<b>(59)</b>	46	Grid-2	11	Altman 6x12 575w	SPECIAL	R 53
<b>(60)</b>	30	Grid-3	1	36 Deg. Source Four 575w	SPECIAL	R 53
<b>(61)</b>	33	Grid-3	3	50 Deg. Source Four 575w	SPECIAL	R 53
<b>(71)</b>	67	LANE-1	1	Altman 6x9 575w	SHIN (DSR)	R 64
	"	LANE-2	"	"	"	"
<b>(72)</b>	68	LANE-3	1	Altman 6x9 575w	SHIN (USR)	R 65
	"	LANE-4	"	"	"	"
<b>(73)</b>	61	LANE-1	1	Altman 6x9 575w	SHIN (DSL)	R 64
	"	LANE-2	"	"	"	"
<b>(74)</b>	62	LANE-3	1	Altman 6x9 575w	SHIN (USL)	R 64
	"	LANE-4	"	"	"	"
<b>(75)</b>	69	LANE-1	2	Altman 6x9 575w	MID (DSR)	R 36
	"	LANE-2	"	"	"	"
<b>(76)</b>	70	LANE-3	2	Altman 6x9 575w	MID (USR)	R 36
	"	LANE-4	"	"	"	"
<b>(77)</b>	63	LANE-1	2	Altman 6x9 575w	MID (DSL)	R 36
	"	LANE-2	"	"	"	"
<b>(78)</b>	64	LANE-3	2	Altman 6x9 575w	MID (USL)	R 36
	"	LANE-4	"	"	"	"
<b>(79)</b>	71	LANE-1	3	Altman 6x12 575w	HEAD (DSR)	R 57
	"	LANE-2	"	"	"	"
<b>(80)</b>	72	LANE-3	3	Altman 6x12 575w	HEAD (USR)	R 57
	"	LANE-4	"	"	"	"
<b>(81)</b>	65	LANE-1	3	Altman 6x12 575w	HEAD (DSL)	R 57
	"	LANE-2	"	"	"	"
<b>(82)</b>	66	LANE-3	3	Altman 6x12 575w	HEAD (USL)	R 57
	"	LANE-4	"	"	"	"

Channel	Dim	Pos	U#	Type & Wattage	Purpose	Color & Temp
<b>(85)</b>	597	Grid-2	3	Chroma-Q PLUS (20 Color)	Control	Frame 1 – 20
<b>(86)</b>	598	Grid-2	6	Chroma-Q PLUS (20 Color)	Control	Frame 1 – 20
<b>(87)</b>	599	Grid-2	10	Chroma-Q PLUS (20 Color)	Control	Frame 1 – 20
<b>(88)</b>	600	CP-1	2	Chroma-Q PLUS (20 Color)	Control	Frame 1 – 20
<b>(89)</b>	601	CP-1	4	Chroma-Q PLUS (20 Color)	Control	Frame 1 – 20
<b>(90)</b>	602	CP-1	7	Chroma-Q PLUS (20 Color)	Control	Frame 1 – 20
<b>(96)</b>	1	Grid-7	1	Strand 6" Fresnel 750w	HOUSE	N/C
	"	"	2	"	"	"
	"	"	3	"	"	"

<b>NOTES:</b>	<b>CHROMA-Q</b>			
	<b><u>Color Name</u></b>	<b><u>DMX Level</u></b>	<b><u>Frame #</u></b>	<b><u>Rosco Color #</u></b>
Color Scrollers -	Clear	0	1	00
Ch 85 Chroma-Q DSR	Canary	5	2	312
Ch 86 Chroma-Q DCTR				
Ch 87 Chroma-Q DSL	Orange	10	3	23
Ch 88 Chroma-Q USR				
Ch 89 Chroma-Q UCTR	Golden Amber	15	4	21
Ch 90 Chroma-Q USL				
GROUP 1 = Ch 85 thru 90	Light Red	20	5	26
NOTE: Chroma-Q PLUS Color Scrollers may NOT be moved or refocused.	Medium Red	25	6	27
	Broadway Pink	30	7	339
	Medium Purple	35	8	49
	Gypsy Lavender	40	9	56
	Congo Blue	45	10	382
	Green Blue	51	11	77
	Sky Blue	57	12	68
	Primary Blue	62	13	80
	Peacock Blue	67	14	73
	Blue Green	73	15	93
	Dark Yellow Green	78	16	90
	Soft Golden Amber	83	17	321
	Skelton Exotic Sangria	89	18	39
	Deep Salmon	95	19	42
	Neon Pink	Full – 100%	20	343